

# Irvine

COMMUNITY NEWS & VIEWS

March, 2015

Serving the Villages and Neighborhoods of Irvine

Volume 2, No. 3

## Publisher's Perspective

### Welcome to ICNV 2015



Welcome to our March issue of *Irvine Community News & Views*. I'm proud to be the Publisher and Editor-in-Chief of ICNV — Irvine's free community newspaper, published in hard-copy format at the beginning of each month, with frequent updates and added features available online.

This month, ICNV is growing from its previous 8-page format to an expanded 12-page format, with more stories and features for readers who want to be "plugged-in" to what's happening.

There are two very easy ways to receive *Irvine Community News & Views*: First, subscribe online — [www.IrvineCommunityNews.org](http://www.IrvineCommunityNews.org) — and have ICNV delivered free, straight to your inbox. Or, second, you can pick up an old-fashioned "hold-it-in-your-hands" copy of ICNV at dozens of Irvine locations — at shopping centers and stores throughout Irvine. On page 5, we list and thank the many business owners and others who make ICNV available to our growing community of Irvine readers. When you patronize their businesses, you may wish to thank them, too!

Please read the two Front Page articles in this Issue of ICNV. They are *very important*. And, remember to vote in the March 17th special State Senate Election. (See page 4.)

*Franklin J. Lunding*

Franklin J. Lunding • Publisher and Editor  
[www.IrvineCommunityNews.org](http://www.IrvineCommunityNews.org)

A lawyer and businessman, Frank Lunding served on the Irvine Planning Commission and, prior to that, as Chair of the Irvine Transportation Commission.



**Sign up free!**  
[www.IrvineCommunityNews.org](http://www.IrvineCommunityNews.org)  
**Get Irvine Community News & Views  
Delivered Straight to Your INBOX.**

**Special Two-Part  
Investigative Report**

## More Toxic Contamination Discovered At New High School Site

*Irvine officials disregard mounting health and safety risks.*

by Harvey H. Liss

After years of controversy — and despite recently discovered evidence of dangerous toxic contamination — Irvine School District (IUSD) officials are continuing to push ahead with construction at the site of the new Portola High School, which IUSD officials have pledged to open in September of 2016.

Located along Irvine Boulevard in the far northeastern area of Irvine near Lake Forest, Portola High School will be IUSD's newest high school — and at \$300 million by far the most expensive.

According to records recently obtained by *Irvine Community News & Views*, evidence continues to mount suggesting that toxic contamination at the 40-acre High School site ("Site A") — and on nearby property — may portend a significant health and safety risk to the thousands of students who will be attending Portola High. The risk is even greater to the teachers and staff who may be working there for 20, 30 or even 40 years.

These risks are known to the School District. Yet, IUSD officials have continued to rush construction of the High School, while concealing important information from the public. In fact, IUSD officials failed to publicly disclose the November 2014 discovery of dangerous toxic contamination, until forced to do so by a Public Records Act request from this reporter.



*Toxic contamination was discovered while constructing this storm drain at the site of the new High School. The discovery and subsequent findings were not disclosed to the public.*

## CONTINUING "DARK MONEY" INVESTIGATION

### State Exposes and Fines New York Developer for Money Laundering in Choi Mayoral Campaign

A New York developer named Howard Rich has been exposed as the secret donor behind a "dark money" campaign to elect Steven Choi as Mayor of Irvine in 2012.

Acting on a 750-page complaint filed by local attorney and political activist Frank Barbaro, the California Fair Political Practices Commission (FPPC) uncovered a money laundering scheme including the New York developer, a Virginia-based Political Action Committee and Irvine Republican political consultant Jon Fleischman.

According to an official FPPC report, Jon Fleischman created the California Term Limits PAC

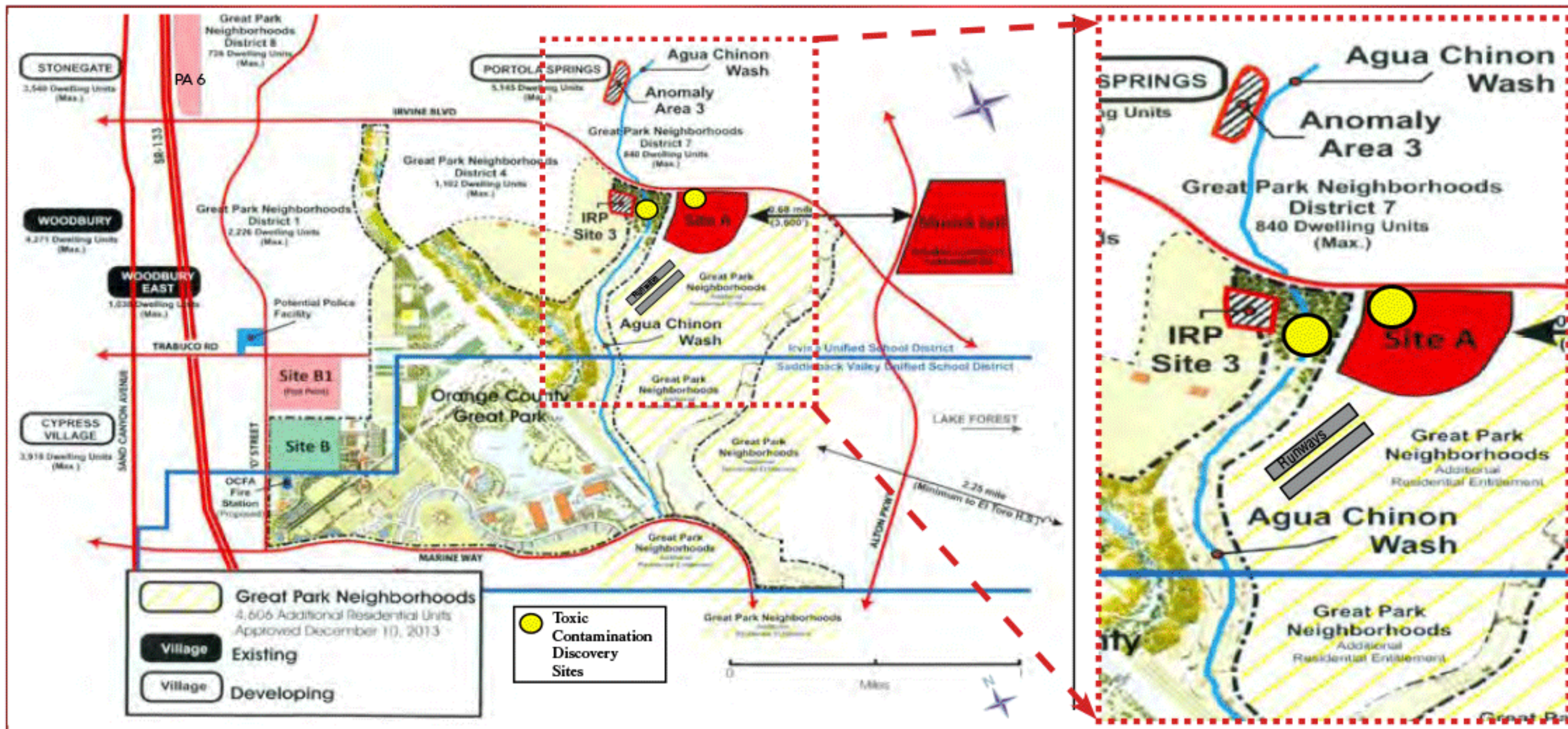
→ continued on page 11 →

### November 2014 Discovery of Toxics

Last November, workers were digging a long trench to install a huge boxed concrete storm drain to serve the school and thousands of new homes yet to be built in the northern reaches of Irvine. The official reports obtained under the California Public Records Act reveal that on November 13th, workers operating earthmoving equipment encountered, at a depth of 16 feet, an unusually strong odor and discolored soil — two red flags for possible toxic contamination. In accordance with State law and regulations, work was stopped. Then higher-ups were notified, and probing of the

→ continued on page 2 →





This map (left) of the northeast area of Irvine includes residential villages surrounding the Great Park. Also shown are three previously considered High School sites — PA 6, Site B1, and Site B. All three were rejected by the School Board and developers FivePoint Communities and the Irvine Company in favor of Site A. The inset area (right) includes Portola High School Site A and the nearby, capped toxic waste dump at IRP Site 3. Also denoted - ● - are the locations where significant toxic contamination has been discovered.

→ continued from page 1 →

contaminated soil continued for 100 feet until apparently clean soil was found.

It soon became evident to workers on site, and presumably to school officials as well, that this was no small spill or “stain,” as later described by environmental consultants for the School District. An email later revealed that the contaminated soil stretched 29 feet onto the Portola High School site; and the contamination permeated the soil to a depth of between 15 feet and 28 feet. By the time all the suspect soil was removed for testing and disposal, the true extent of the “stained soil” hauled away amounted to 78 truckloads — nearly 1,000 cubic yards.

**Test Results**

Ordinarily, laboratory testing to determine levels of toxins and carcinogens (cancer-causing agents) in soil samples is a straightforward process completed in a matter of days. Yet in the days and weeks after the initial discovery of potentially dangerous and toxic contamination, no test results were provided to the public. No press releases were issued. No newspaper stories appeared. It was as though the worrisome discovery had never happened.

Except it did happen. Tests were performed, but the results remained a secret, hidden from the public. Finally, in response to a citizen’s January 27, 2015 Public Records Act request, on February 10th — three months after the initial

discovery of what had been described simply as “stained soil” containing “non-hazardous petroleum hydrocarbons” — 245 pages of documents were released by School District officials, including dozens of pages of test data.

The findings? There were significant and often remarkably high levels of hazardous petrochemicals — some levels were far beyond the “maximum permissible contaminant concentration.” These included significant concentrations of various benzene derivatives, naphthalenes, and extraordinary concentrations of diesel. In addition, soil samples contained significant concentrations of heavy metals, for example: lead, chromium, cobalt and vanadium. None of these toxic and — in some cases — carcinogenic agents typically occur in the natural environment. With sufficient exposure, all of them can cause discomfort and even devastating disease — in laboratory animals and in humans.

**More Questions**

The test results — and the sheer magnitude of the contaminated soil discovered on Site A — raise a number of obvious, troubling questions: What is the source of the contamination? Might there be much more toxic contamination nearby or elsewhere on Site A? Don’t these results suggest a much higher risk than previously thought to the health and welfare of future Portola High School students, faculty and staff?

→ continued on page 3 →

→ continued from page 2 →

None of these questions appear to have been raised by School District officials, or consultants, according to public records released so far. On the contrary, in emails from the School District’s chief environmental consultant, Denise Clendingen, of PlaceWorks, IUSD officials were being urged to release as little information as possible about test results and their implications.

Identifying the original source of any toxic contamination is essential. Is there more toxic contamination — perhaps much more — to be discovered? Site A was part of the vast, 4,700-acre El Toro Marine Corps Air Station, with intense military operations from 1942 to 1999 that involved the heavy use and dumping of toxic fuels and chemicals. The pollution at El Toro was so intense and prolonged that the Airbase was declared a national Superfund site in 1990 and has been undergoing cleanup by the U.S. Department of the Navy ever since. Much of the cleanup has taken place, but much has not.

It’s possible that the massive contamination discovered at Site A, which is near an old runway, came from localized dumping of fuels, solvents, and even discarded aircraft parts at the end of the runway. Another possibility is that the toxic contaminants found at Site A are part of a much larger toxic pollution problem that may have emanated from a nearby toxic waste dump — the now-capped landfill within IRP Site 3, located only 250 yards northwest of Site A, just on the other side of the Agua Chino Wash, which is adjacent to Site A.

From 2009 to 2014, in opposing Site A as a school site, former Irvine Councilman Larry Agran frequently pointed to toxic waste dump IRP Site 3 (and nearby Anomaly Area 3) as posing a toxic pollution danger that should rule out Site A for any school. Agran, a public interest attorney specializing in environmental health law, noted that in 2003 the City of Irvine published an Environmental Impact Report which described IRP Site 3 as the original waste disposal dump for the Airbase, covering approximately 20 acres, and operating from 1943 to 1955 (including World War II and the Korean War). The contents of IRP Site 3 were said to include “municipal solid waste, scrap metal, incinerator ash, construction debris, paint residues, unspecified oily wastes, industrial solvents, hydraulic fluid and engine coolants.”

In other words, said Agran, “Everything went into that dump. And mind you, this dump was just a great big hole in the ground. There was no protective liner to contain its contents. There was no thought of environmental protection. In fact, the phrase ‘environmental protection’ wasn’t even part of the American lexicon in those days.”

Agran noted, “Toxic dumping, coupled with

the effects of local geology, suggests the possibility of lateral migration, now or in the future, across and under the Agua Chino Wash and onto Site A.”

He added, “It should be noted that in 2012 and 2013 it was revealed that workers operating earthmoving equipment had discovered dangerously high concentrations of toxic waste in the Agua Chino, just 75 yards from Site A. Lower concentrations of the same and related toxic chemicals were also found on the edge of Site A.”



Just 250 yards from the future Portola High School is a capped, toxic waste dump that will remain a restricted area.

**Major Construction Getting Underway**

Despite repeated exhortations from Agran and others, the Irvine School Board, Superintendent Terry Walker, and State officials have either ignored or dismissed the growing evidence of a very serious toxic contamination problem. On March 4, 2013, Irvine City Manager Sean Joyce wrote a letter to the Irvine Unified School Board, urging that the Board and District not give final approval to Site A for the High School until it took the time to conduct further testing. This request, too, was ignored.

Instead, in their public pronouncements, Superintendent Walker and other IUSD officials continued to stress the importance of relieving overcrowding at existing Irvine high schools by opening Portola High School for 600 ninth graders in September of 2016.

When recently interviewed about the latest

discovery of toxic contamination at Site A, former Councilmember Larry Agran expressed alarm and apparent disgust. Referring to officials in positions of public responsibility — especially School District officials — Agran said, “They ignore everyone and everything. They even ignore national standards and guidelines that clearly state: do not locate a school within 1,000 feet of a toxic waste dump, period! Yet, that’s exactly what they’re doing. Rather than asking some important questions, they are pushing ahead and risking the health and welfare of our community.”

Agran added, “IUSD should simply do what’s prudent and in the public interest, rather than risking the health of generations of students, teachers and staff by doing the absolute minimum required by law. Instead of all the obfuscation, ducking, weaving and shortcuts, IUSD should stop all site preparation and any preliminary construction right now. They should stop building and start testing. They should undertake much more comprehensive testing than what was originally performed for toxics on Site A, and all around Site A. With the help of truly independent experts representing the students, teachers and staff rather than the developer, they would figure out what’s going on and possibly avoid a terrible tragedy.”

On November 19, 2014, IUSD staff sent an email to the School Board alerting Board members to the discovery of potentially contaminated soil that was discovered at Site A during excavation work for the storm drain along Irvine Boulevard. School Board minutes do not indicate that this matter was ever reported or discussed publicly.

*Dr. Harvey H. Liss, a former Irvine Planning Commissioner, holds a Ph.D. in Applied Mechanics and is a California Licensed Civil Engineer. Dr. Liss is a longtime resident of Woodbridge, the iconic Irvine village he helped design in the 1970s.*

**Next Time: Part Two**

**The Irvine Community Poll ... What Do You Think?**

Take Our Poll at [www.IrvineCommunityPoll.org](http://www.IrvineCommunityPoll.org)  
**Should the Irvine Unified School District halt construction and order more testing for toxic contamination at the new Portola High School site (Site A)? What do You think?**

Even if it means possibly delaying the September 2016 opening of Portola High School, should the School District order a “time out” on construction of Portola High School in order to undertake comprehensive testing at Site A — and all around Site A — for evidence of toxic contamination?

**What Do You Think?**

Go to [www.IrvineCommunityPoll.org](http://www.IrvineCommunityPoll.org) to take the poll!



# CITYWATCH

## SCHOOL WATCH

by Carlyn Inmon

### SAFETY FIRST!

Safety First! From early childhood on, this powerful admonition is repeated in American homes time and again. It's a mantra in our schools, too.

To this day, I vividly remember that when I took my first education course — on the way to earning a teaching credential — my UCLA professor was clear as could be: The first priority of California's public schools is the safety of school children.

That's right, it holds a higher priority than teaching math, science, reading, the arts...or anything else. When you think about it, there is good reason for making safety (and health) the topmost priority in our public schools. Our society is organized to require school attendance — at a public school or at a suitable alternative. School is *not* an option — it's compulsory. This means that when our children attend school, they are put in the custody of others. From the moment little Suzy meets the school crossing guard in the morning until the afternoon when she is delivered back to her parent, Suzy is in the custody of the school and the State of California. In effect, the school and the State take the place of the parents for the entire school day. There is even a legal term for this — it's *in loco parentis*, which is Latin for "in the place of a parent."

This has huge implications. Think of the health and safety concerns we hear about and talk about every day — vaccinations, transportation safety including school buses and cars, gun safety and earthquake safety, and protection against toxic exposure and even bullying. We tend to take for granted that our schools will keep our children safe.

Well, we *shouldn't* take safe schools for granted! Without constant vigilance, our schools and our children will be less safe than they should be. And teachers and school staff will be less safe than *they* should be. Across the country, hundreds of school children and teachers are exposed to gun violence every year. And many thousands of faculty, staff and students are exposed to dangerous toxic contamination — right on the school site and from nearby sources.

We all have a moral responsibility to insist on safe schools, here in Irvine and everywhere. We have legal responsibilities, too. If you don't think so, consider this: When our schools fail to put safety first — when faculty, staff and students get sick or injured as a result — there can be hundreds of millions of dollars in legal liability that, ultimately, is a further burden on all taxpayers.

In future columns, we can take a closer look at specific health and safety issues in our schools. Sometimes it's bad news, but often it's good news. I always welcome your comments and insights.

*Carolyn Inmon is a retired Irvine teacher. She has taught at virtually every grade level, from K - 12, as well as community college. She served as President of the Community College Association from 2005 - 2007. Carolyn welcomes your comments and ideas at:*

[Carolyn@IrvineCommunityNews.org](mailto:Carolyn@IrvineCommunityNews.org)

## ELECTION WATCH by Luis Alemán

### MARCH 17 STATE SENATE ELECTION

On Tuesday, March 17th, in a special election, voters in the 37th State Senate District will decide who will replace Mimi Walters, who was elected to the U.S. House of Representatives (CA-45th District) this past November.

Assemblymember Don Wagner (AD 68), former Orange County Supervisor John Moorlach, and former congressional aide Naz Namazi — all Republicans — are vying to fill the now-vacant seat of Congresswoman Walters. Democrat Louise Stewardson has announced a write-in campaign in the heavily Republican district, where Republicans hold a 13-percentage point registration advantage.

In addition to all of Irvine, the 37th State Senate District includes all or parts of Anaheim, Costa Mesa, Huntington Beach, Lake Forest, Laguna Beach, Laguna Woods, Newport Beach, Orange, Tustin, and Villa Park.

Assemblyman Don Wagner and former Supervisor John Moorlach are considered the frontrunners in the race. Wagner is an Irvine resident who touts his ability to work across party lines, while he boasts of a conservative voting record — scored by the California Republican Assembly (CRA) at 94 percent. Wagner also touts the endorsements of now-Congresswoman Mimi Walters, Congressman Dana Rohrabacher, Sheriff Sandra Hutchens, District Attorney Tony Rackauckas, Senate

GOP leader Bob Huff, and three Orange County Supervisors.

John Moorlach points to his own conservative credentials, including his fiscal policies when he was Orange County's Treasurer-Tax Collector and County Supervisor. He also notes his earlier prediction of the County's 1994 bankruptcy. Moorlach has been endorsed by the California Republican Assembly, Congressman Tom McClintock, and various members of the Orange County Lincoln Club.

Naz Namazi is running as a conservative outsider who is willing to fight the Republican Party establishment. She positions herself as the most conservative of the three Republican candidates. Neither Namazi nor the Democratic write-in candidate Louise Stewardson have candidate statements in the official voter pamphlet.

If no candidate receives more than 50 percent of the votes on March 17th, there will be another special election — a "top-two" runoff on May 19th.

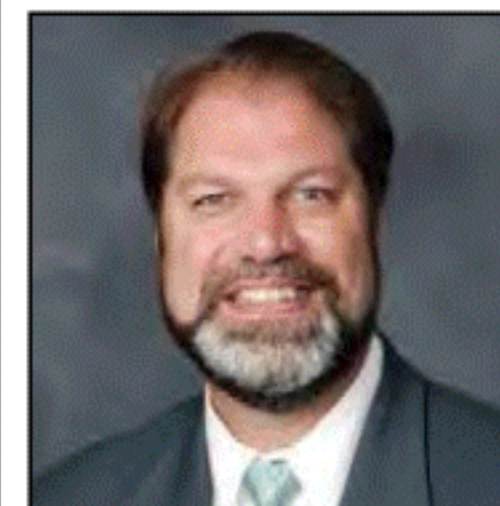
### ICNV Endorses Don Wagner in the State Senate Race

In what is essentially a race between long-time politicians Don Wagner and John Moorlach, we endorse Don Wagner. As a member of the State Assembly, Don Wagner has served Irvine residents well. We note his willingness to reach out and listen to constituents. And we applaud his leadership in winning approval of a State Veterans Cemetery at the Great Park. We trust that, if elected to the State Senate, Wagner will follow through and ensure that the Cemetery is built and open to veterans and their families within the next 3 to 4 years, as promised.

Franklin J. Lunding • Publisher and Editor



Don Wagner



John Moorlach

# THANK YOU TO THESE IRVINE BUSINESSES WHERE YOU CAN PICK UP IRVINE COMMUNITY NEWS & VIEWS

### Woodbridge Village Center

Truehaft's Fine Jewelry  
CorePower Yoga  
Irvine Car Wash  
Ruby's Diner  
Champagne French Bakery Cafe  
Pedego Electric Bikes

### Harvard Place / Harvard & Main

Einstein Brothers Bagels  
Ralphs  
Z -Pizza  
Rubio's  
Nurtrishop/Sports Nutrition  
Irvine Optometry - Dr. Ruth Tang O.D.

### Cypress Village Shopping Center

Jeffrey & Trabuco  
Albertsons  
Cumin  
Da Luau Hawaiian Grill

### University Park Center Culver & Michelson

Tacos & Co.  
Hen House Grill  
Java Bakery Cafe  
Mag's Donuts & Bakery

### Parkview Center / University & Michelson

I-HOP  
Farm Direct Market  
Alton Square/Alton & Jeffrey  
Starbucks Coffee  
Donut Star  
Ralphs  
Kriser's for Your Pets-All Natural Life

### Old Town Irvine / Sand Canyon & 5 Fwy

Knowlwood  
Denny's Restaurant  
Culver Plaza Shopping Center / Culver & Irvine Center Drive  
All That Barbeque / Korean BBQ  
The Car Spa

### Osborn St. / East Yale Loop & Barranca

Dr. John Pasko, DD

### Westpark Plaza / Alton & Culver

Sprouts Farmers Market  
Albertsons  
Starbucks Coffee

### Heritage Plaza / Culver & Walnut

Ralphs  
Walnut Village Center / Culver & Walnut  
Subway  
Starbucks Coffee

### Harvard & Michelson

Irvine Lanes

### Oak Creek Shopping Center

Jack's Surfboards  
Upper Crust Pizza  
Baja Fresh Mexican Grill  
Orange Theory Fitness



## SPOTLIGHT ON SMALL BUSINESS - PEDEGO

PEDEGO electric bikes/ Bob Bibee, owner • 4624 Barranca Pkwy/ Irvine, CA 92604 • (949) 274-7944 • [www.pedegoirvine.com](http://www.pedegoirvine.com)



Bob, his wife Yo, two interns from last term and son on the end.

Bob Bibee lived in Huntington Beach and worked in the aerospace industry, when he decided people were not meant to work in a 10'x10' office. Eventually, he moved to Irvine, opening PEDEGO two years ago. Bob, his wife Yo, and their three children have now lived in Irvine for 19 years.

Bob's mission and passion is helping people to leave cars at home and use bikes for errands, commuting and just plain fun! "Irvine," he says, "is probably the best location in the world for bike lanes and off-street trails. It's just incredible."

"Electric bikes help cross the bridge between those who love to ride and those who may struggle to ride. Electric bikes provide fresh, exciting, fun outdoor activity for families — and include Tandems, Tag-a-longs and Trailers for youngsters."

PEDEGO's initial targeted demographic was baby boomers — some perhaps with problem hips or knees, MS, obesity — issues that discourage biking because of hills, inclines, and distance. Enter the E-bike! Now, Bob's clients can be seen with what he calls the PEDEGO SMILE — they say they "feel like a kid again."

Even millennials are on board. For example, one 20-year old student's parents offered to buy a car for her 24-mile round-trip commute to work. Her response? "But I don't want a car — I want this E-bike."

The PEDEGO business model includes hosting corporate events for Boards of Directors, for Team-Building, and for corporate Sales Staff. His hosted events provide full connectivity for meetings and presentations on site. It's so much better than a sterile hotel.

How's this for a perfect business day hosted by PEDEGO? Breakfast catered by Champagne Bakery — coffee and quiche; lunch with a team-building scenic ride to Strawberry Farms offering outdoor and indoor dining; and late afternoon artisan cheese and baguettes from Champagne Bakery. Also, there's the intimate Pub and Wine Bar with cool music.

PEDEGO is the perfect business, in the perfect community, in the perfect Woodbridge Village Center — and Irvine is the perfect hub for hundreds of miles of unparalleled, beautiful biking experiences.

Special events at PEDEGO will be announced throughout 2015. Stop by anytime. You'll be amazed!





# Community Calendar

# March 2015

## Sundays At The OC Great Park

### Story Time In The Garden

Location: Farm + Food Lab 10am-11am  
 Recurring **FIRST SUNDAY** of every month.

### Clinic In The Park

Location: Farmers Market at the Great Park 10am-2pm  
 Recurring **SECOND SUNDAY** of every month.

### Children's Garden Workshops

Location: Farm + Food Lab 11am-1pm  
 Recurring **THIRD SUNDAY** of every month.



### Orange County Model Engineers Public Rides



Public ride days are the highlight for the club. They are conducted on the third Saturday and following Sunday of each month from 10:00 am until 3:30 pm. Yearly, we give rides to over 30,000 people. The club has a variety of engines and riding cars. Trains on public ride days are made up of 4 to 6 bench cars that seat 5 to 6 adults and children. Rides are free. However, donations are welcome and help keep the trains running.

Orange County Model Engineers  
 2500 Placentia Avenue  
 Costa Mesa, CA 92626  
 Info: [www.ocmetrains.org](http://www.ocmetrains.org)

Sunday	Monday	Tuesday	Wednesday	Thursday	Friday	Saturday	
<b>1</b> Certified Farmers Market. OC Great Park. 10am-2pm. Rain or Shine.  Story Time in the Garden. OC Great Park Farm + Food Lab. 10-11am.	<b>2</b> School Age Book Club. Katie Wheeler Library. 13109 Old Myford Rd. 4pm.  Info: 714-669-8753	<b>3</b> Morning Fitness Hike. Paved Hicks Haul Road 9-11:30am.  Info: LetsGoOutside.org	<b>4</b> Chinese Storytime. University Park Library. 4512 Sandburg Way. 10:30am.  Persian Storytime. University Park Library. 4512 Sandburg Way. 5pm.  Info: 949-786-4001	<b>5</b> Planning Commission Meeting. Irvine City Hall. 5:30pm-8pm.  	<b>6</b> Parent & Me Outdoor Yoga. OC Great Park Balloon Lawn 9:30-10:30am.  Toddlers and preschoolers will explore movement in a safe and fun environment, while creating a bonding experience with the parent. Parent participation required; fee is per child.  Info: OCGP.org	<b>7</b> Excursion to the Getty Center. Explore the incredible art collection, amazing architecture and spectacular hilltop views. Bring a lunch or enjoy one of the three cafes located on site. Fee includes motor coach transportation; lunch at participant's expense. \$29 (IFAC Member: \$27). Ages 18+. 9am-4pm. Info and Registration: 949-724-6880	
<b>8</b> Certified Farmers Market. OC Great Park. 10am-2pm. Rain or Shine.  Clinic in the Park Farmers Market at the OC Great Park. 10am-2pm.  Info: ClinicInThePark.org	<b>9</b> Teen Advisory Group. Katie Wheeler Library TAG – the Teen Advisory Group meets every 2nd Monday of the month to discuss teen library concerns, munch out, and plan future fun TAG events. Ages 13-18yrs. Get an application for TAG! Drop-ins welcome. 5-6 pm. Info: 714-669-8753	<b>10</b> City Council Meeting. Irvine City Hall. 5pm.  	<b>11</b> Momix: Alchemia. Presented by Irvine Barclay Theatre. Enter a world of surrealistic images and wonder. Alchemia is all about the art of alchemy, and the alchemy of art. It's an enchanting, phantasmagorical multimedia spectacle brimming with sensual beauty and humor. 8pm.  Info and tickets: TheBarclay.org	<b>12</b> Wee Wonder Walks: Nifty Nests. From a thimble-size cup to a compact car, animal nests come in all shapes and sizes. Take a peek in a picture book to guess who lives in each nest. Using fun recycled materials, we will make an animal nest to take home. Then, search the trails for springtime animal nests. 10-11am.  Info: LetsGoOutside.org	<b>13</b> Parent & Me Outdoor Yoga. OC Great Park Balloon Lawn 9:30am-10:30 am.  Info: OCGP.org  	<b>14</b> Read to a Dog at University Park Library. Children 12 and under are invited to read to licensed therapy dogs! This is an opportunity to improve reading skills while meeting new canine friends. All participating dogs are part of B.A.R.K. Free! No registration required. 11am-12pm.  Info: 949-786-4001	
<b>15</b> Certified Farmers Market. OC Great Park. 10am-2pm. Rain or Shine.  Children's Garden Workshop. OC Great Park Farm + Food Lab. 11am-1 pm.	<b>16</b> Homework Help. University Park Library 3pm.  Info: 949-786-4001	<b>17</b> ELECTION DAY. A Nowruz Celebration featuring Kayhan Kalhor and Shujaat Khan. Presented by The Philharmonic Society of Orange County. Marking the arrival of spring, Nowruz (the Persian New Year) is a unifying force celebrated by diverse people from various ethnic communities and religious backgrounds. 8pm. Info and Tickets: TheBarclay.org	<b>18</b> Volunteer at the Native Seed Farm. Sign up to help behind the scenes at the Irvine Ranch Conservancy's one-of-a-kind native seed farm in Irvine! You will be helping us expand the Farm's impact by planting new plants into our growing fields, and weeding to protect them while they grow. 9am-12pm.  Info: LetsGoOutside.org	<b>19</b> Planning Commission Meeting. Irvine City Hall 5:30pm-8pm.  2015 Irvine Police Department Awards Banquet Sponsored by the Exchange Club of Irvine. Irvine Marriott Hotel 18000 Von Karman Ave. 5:30 pm.  Info: ExchangeClubOfIrvine@gmail.com	<b>20</b> Canyon Explorers: Fancy Feet. Examine critter feet up close to decipher how to recognize different animal track patterns along the trails. While on our hike, search for local animal tracks in Bommer Canyon. Minimum age: 6. 4-5:30pm.  Info and Registration: LetsGoOutside.org	<b>21</b> Seasoned Chefs Culinary Workshop. OC Great Park Farm + Food Lab. 10-11am.  Info: OCGP.org  	
<b>22</b> Certified Farmers Market. OC Great Park. 10am-2pm. Rain or Shine.  Nowruz Persian New Year 1pm-6pm. The event is free and the community is welcome to attend. Bill Barber Park Rose Garden 4 Civic Center Dr.  Info: contact@iac-group.org	<b>23</b> Toddler Storytime. University Park Library 11am.  Info: 949-786-4001	<b>24</b> City Council Meeting. Irvine City Hall. 5pm.  	<b>25</b> Yoga In Bommer Canyon. A relaxing combination of hiking and yoga in Bommer Canyon. Participants will hike around a 1-mile loop, strolling through the local meadow and finding unity within nature. Then we will return to our yoga mats where we will be led in 45 to 60 minutes of guided yoga. 9am-10:30am. Info and Registration: LetsGoOutside.org	<b>26</b> Homework Help. Katie Wheeler Library. 13109 Old Myford Rd. 3:30pm.  Info: 714-669-8753	<b>27</b> History Repaints Itself Irvine Fine Arts Center Exhibition. History Repaints Itself is a group exhibition that pays tribute to innovative masters of the past through reimagined or referenced renditions of iconic and classical art. This educational project will challenge viewers to contemplate art history and its contemporary influence. Runs through April 18th. Info: 949-724-6880	<b>28</b> Spring Garden Workshop. at the Great Park Farm + Food Lab. 10-11am. Learn everything you need to know about sustainable home gardening practices. Workshops are led by certified University of California Cooperative Extension Master Gardeners of Orange County. Topic: Bountiful Summer Vegetables Info: ocgp.org	
<b>29</b> Certified Farmers Market. OC Great Park. 10am-2pm. Rain or Shine.  	<b>30</b> After Work Fitness Hike. Hicks Haul Road 6pm-7:30pm.  Info: LetsGoOutside.org	<b>31</b> Adult Book Club. 10:30am.  Homework Help. 3:30pm.  Katie Wheeler Library 13109 Old Myford Rd.  Info: 714-669-8753	<b>St. Patrick's Day March 17th</b>  <b>Special State Senate Election</b>				

## Adoptable Pet of the Month

Each issue we feature one "adoptable" pet from the Irvine Animal Care Center. The Irvine Animal Care Center (IACC) is a progressive and innovative municipal animal shelter that continually strives to strengthen the human-animal bond and improve the welfare of animals by promoting their humane care and treatment. The Center's 3.73 acre, park-like facility cares for thousands of homeless, neglected and abused animals every year. All animals in their care receive veterinary care, high-quality food, soft bedding and daily socialization.



"Toby" is a male, neutered, domestic shorthair mix, weighing 13 pounds. He is roughly 4 years old.

For more information about "Toby" and other adoptable pets, or the IACC call 949-724-7740 or email [info@irvineshelter.org](mailto:info@irvineshelter.org)

## 2015 Irvine Police Department Awards Banquet

Now is the time to pledge your support for the 2015 Irvine Police Awards Banquet - scheduled for March 19, 2015. You can buy a table and attend with a group of friends for \$775 or be a community supporter for \$250 and attend with a guest and enjoy a great evening. This annual event recognizes the many ways the men and women of the Irvine Police Department make our community a better place to live, work and play.



**Thursday, March 19, 5:30 pm, Irvine Marriott Hotel, 18000 Von Karman Ave.**  
 Info: [exchangeclubofirvine@gmail.com](mailto:exchangeclubofirvine@gmail.com) or call 949-533-374

## Irvine Has Heart Food Drive

The City of Irvine, in partnership with the Second Harvest Food Bank, kicked off its annual Healthy Food Drive on Valentine's Day. Donations will benefit several Irvine food pantry distribution programs. Residents are asked to donate healthful canned or non-perishable food items. The main drop-off location for the food drive is in the Civic Center lobby.  
 Info: 949-724-6680







**A NOTE TO OUR READERS...**

Our "Open Forum" and "Community Voices" — as well as our "Irvine Community Poll" — have proved to be the most popular interactive features of *Irvine Community News & Views*. Of course, we welcome all comments and opinions. While

we can only publish a representative sample of the comments and opinions we receive, I want our readers to know that our staff reads and appreciates each and every e-mail or letter you send our way. Keep 'em coming!  
- FJL

**Irvine Community Poll Results...  
A New Animal Care Shelter at  
the Great Park?**

Last month's front-page story — "Rethinking Irvine's Animal Care Center" — was accompanied by our Irvine Community Poll question: Do you favor or oppose studying establishment of a new Animal Care Center at the Great Park? The Poll elicited a very strong community response in favor of the study — with scores of accompanying comments. Here are the results and a representative sample of the comments received.



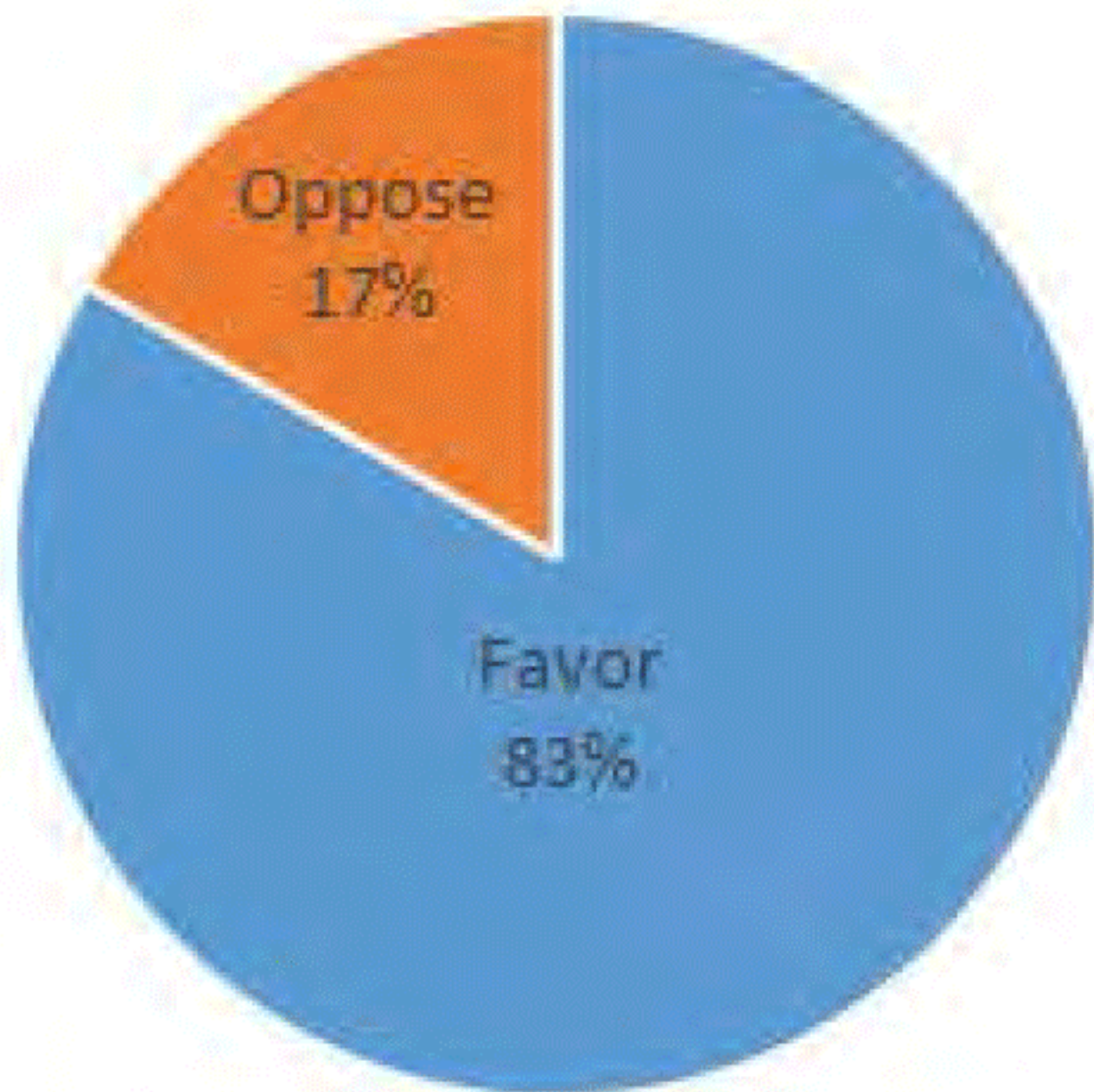
"This looks like a great place to land!"

When the new Center is completed, the old 3.5-acre property may be sold for \$2 million or more per acre, creating a net gain to the City of \$4 million or more. It is foolish and wasteful not to build a new facility.

- Ira Lewis

Since the early 1980s, when the current shelter was built, advances have been made by the animal welfare community in caring for sheltered animals. Cats now live in colonies. Kennels are constructed large enough where 3 or 4 dogs live together, thus keeping them dog-friendly and lessening their stress. This cannot be achieved on the current campus. The shelter needs a bigger space. The Great Park is a perfect place for a new, energy efficient state-of-the-art Animal Care Center — a shelter Irvine can be proud of.

- Gail Lewis



The City of Irvine is growing. We need a larger facility to cope with the population growth and the corresponding growth in pet owners and abandoned pets.

- Magda Elzarki

Use the previous study done in 2010 — and update it for the Great Park and 2015. That study concluded that a new, up-to-date Animal Care Center that is approximately 3 to 4 times the size of the current facility can be built for \$3 million over the cost of repairing the current Irvine Animal Care Center.

**MORE COMMUNITY VOICES**

**More comments on the passing of Stan Corey**



Pictured (left to right) are Dan Thomas, Craig Ritter, Marilyn Boyd, Joann Hodder — four IUSD past principals in attendance at a February 14th memorial gathering to honor Stan Corey, the District's founding School Superintendent.

It was exciting to be part of a start-up School District. Stan had a vision and a lot of energy — and there was no shortage of spontaneous combustion around him. People's ideas, input and initiative were valued. In the early years of collective bargaining, not all district administrators were on board with the notion of teachers becoming unionized. On multiple occasions when negotiations were stalling and ill will was building, Stan would make an appearance during a bargaining session and say a few words, reminding us that we were all on the same team and the tension in the room would noticeably dissipate.

As a grievance representative for the Irvine Teachers Association, I further experienced Stan's respect for teachers, as he frequently got involved in the process, urging a fair settlement. When the dust settled, there never seemed to be any malice or negative repercussions against the teachers involved. His idealism was palpable and made employees at all levels want to lengthen their strides.

- Jean Anne Turner

OC Teacher of the Year, 1988 and 2000

I have cherished memories of Stan Corey. The door of my classroom opened at the Greentree "instant school" and a very tall gentleman with an incredible smile inquired how things were going on the first day of school. I said, "We need drinking water...and who are you?" He replied, "I am Stan Corey." And a water cooler was delivered to my classroom within an hour.

I recall that his office door was always open and he welcomed you with that infectious smile and a twinkle in his eyes, to share ideas, concerns or just sit and talk. That was his style.

Mr. Corey always encouraged me to implement my ideas even though they might seem unconventional. He taught me to take risks. He would say, "The only time we have is now. Go for it!" He never failed to acknowledge my efforts with a call, note or a classroom visit.

Mr. Corey, thanks for the lessons you taught me by being the kind of person you were. You left your footprints on my heart.

- Genie Aguilar

OC Teacher of the Year, 1988

In this day and age, all animals need to have a nice place until they get a forever home.

- Stephanie Grosch

This would be a fantastic addition to the community. Wildlife rescue and livestock care would maintain the values of Irvine and Orange County — drawn from our agrarian past. Children would grow up and appreciate the history of Irvine.

- Stephen Green

I absolutely oppose spending any public funds on this study. With so many people in our area in need of assistance, it would be shameful to spend another penny on animal welfare. The City of Irvine already has a first-class Animal Care Facility. Enough is enough!

- George Malouf

The Animal Care Center Irvine has is great as far as I'm concerned. I call it the country club of animal shelters.

- Patricia Grawburg

A new state-of-the-art Animal Care Center is a wonderful idea for Irvine. Irvine provides a superb quality of life for its humans and it should do the same for its animals.

- Kay Kaplan

The Irvine Animal Care Center is old and severely outdated. There are maintenance issues and the kennel building has no heating for the dogs that are on concrete, which is cold and damp as it is. Irvine, a place where everything tends to be new and top-notch, can and should do better by the animals in its care.

- Claire Vinet

Unlike the proposed library that would only replicate existing services, this visionary Animal Care Center would be a destination place the people of Irvine could be proud of. I would consider the money well spent.

- Davida Gregory

Yes, a new Animal Care Center. Irvine has had a long tradition of caring for animals. Let's stay a progressive, safe haven for animals in our beautiful City.

- Karen Lavelle

This is a great idea. Our community needs to be committed to the humane treatment of animals.

- Alex Kaplan





# March into Literacy!



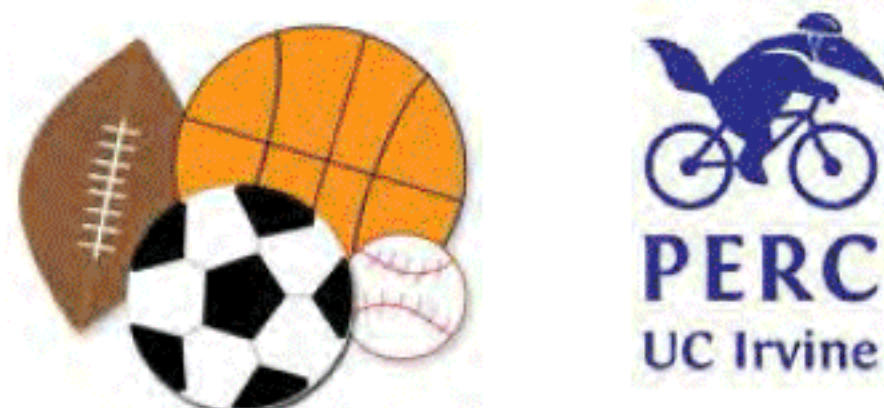
**When: Sunday, March 8, 2015, 10AM-2PM**  
**Where: Great Park Farmers Market**  
**Sand Canyon and Marine Way**

### SERVICES

- Chat with a Physician: Children's Literacy
- **Dr. Geeta Grover, MD (American Academy of Pediatrics & UCI)**
- Burn Prevention with UC Irvine Health
- Spin to win prizes • Physical Activities • Games!
- **UC Irvine Pediatric Exercise Research Center (PERC)**
- **Books, Bike Helmets, Booster Seats**
- **Adventure Farm Tour: Learn about the Great Park Farm!**

*The more that you read, the more things you'll know.  
The more that you'll earn the more place you'll go!*  
Dr. Seuss

**SPORTS IN THE MEADOW!**  
Register at [cityofirvine.org](http://cityofirvine.org)!  
Or join if available space.



Visit: [www.ClinicinthePark.org](http://www.ClinicinthePark.org)  
Email: [info@clinicinthepark.org](mailto:info@clinicinthepark.org)  
Call: (949) 385-3067

Clinic in the Park @ClinicinthePark



→ continued from page 1 →



Mayor Steven Choi benefitted from the \$200,000 dark money scheme.

on August 1, 2012. A few weeks later, New York developer Howard Rich wired \$200,000 to a Virginia-based Political Action Committee called Citizens in Charge. This PAC sent the \$200,000 to Fleischman's PAC without disclosing Rich as the donor.

A report by the FPPC staff called the violations "serious," adding that they go to the heart of the Political Reform Act.

"A central purpose of the Act is to ensure that receipts and expenditures in election campaigns are fully and truthfully disclosed so that the voters may be fully informed, and improper practices may be inhibited," the staff report said.

The \$200,000 was used by Fleischman's group primarily to fund a series of vicious political "hit pieces" attacking Choi's opponent for Mayor, Larry Agran.

"After two years of investigation, we now know the source of the illegally laundered \$200,000 was used to corrupt our local election," said Mr. Agran. "But we still don't know the whole story. Why would a New York developer bankroll the election of Steven Choi as Mayor of Irvine, California?"

The answer may lie in the fact that Mayor Choi had emerged as the leading

proponent of increasing growth and development in Irvine. He has taken credit for pushing through FivePoint Communities' plan to build 10,000 new houses and apartments at the Great Park. In return, FivePoint Communities and other developer interests spent more than \$500,000 to support Mayor Choi's re-election in 2014.

Howard Rich and Citizens in Charge were fined \$14,000, the maximum allowed by law. The FPPC is continuing to investigate Jon Fleischman and his role in the money laundering scheme.

In a letter to the Fair Political Practices Commission, Frank Barbaro said, "The facts outlined in my complaint, however, raise many inferences and questions, all of which seem to indicate a criminal conspiracy. The result of this conspiracy was the change of control of the Irvine City Council and the approval of a development, by a single land developer, of over 10,000 additional homes in Irvine on a 3 to 2 vote of the Irvine City Council."

The continuing FPPC investigation, now two years old, is expected to shed light on the "dark money" behind Steven Choi's political career.

proponent of increasing growth and development in Irvine. He has taken credit for pushing through FivePoint Communities' plan to build 10,000 new houses and apartments at the Great Park. In return, FivePoint Communities and other developer interests spent more than \$500,000 to support Mayor Choi's re-election in 2014.

Howard Rich and Citizens in Charge were fined \$14,000, the maximum allowed by law. The FPPC is continuing to investigate Jon Fleischman and his role in the money laundering scheme.

In a letter to the Fair Political Practices Commission, Frank Barbaro said, "The facts outlined in my complaint, however, raise many inferences and questions, all of which seem to indicate a criminal conspiracy. The result of this conspiracy was the change of control of the Irvine City Council and the approval of a development, by a single land developer, of over 10,000 additional homes in Irvine on a 3 to 2 vote of the Irvine City Council."

The continuing FPPC investigation, now two years old, is expected to shed light on the "dark money" behind Steven Choi's political career.



Jon Fleischman continues to be under investigation for money laundering.

### Paid Advertisement

## SENIORS AND FAMILIES WITH SENIORS

Making real estate decisions when you are a Senior is *different!*

Does this sound like it applies to you or your family? Have all options been explored?

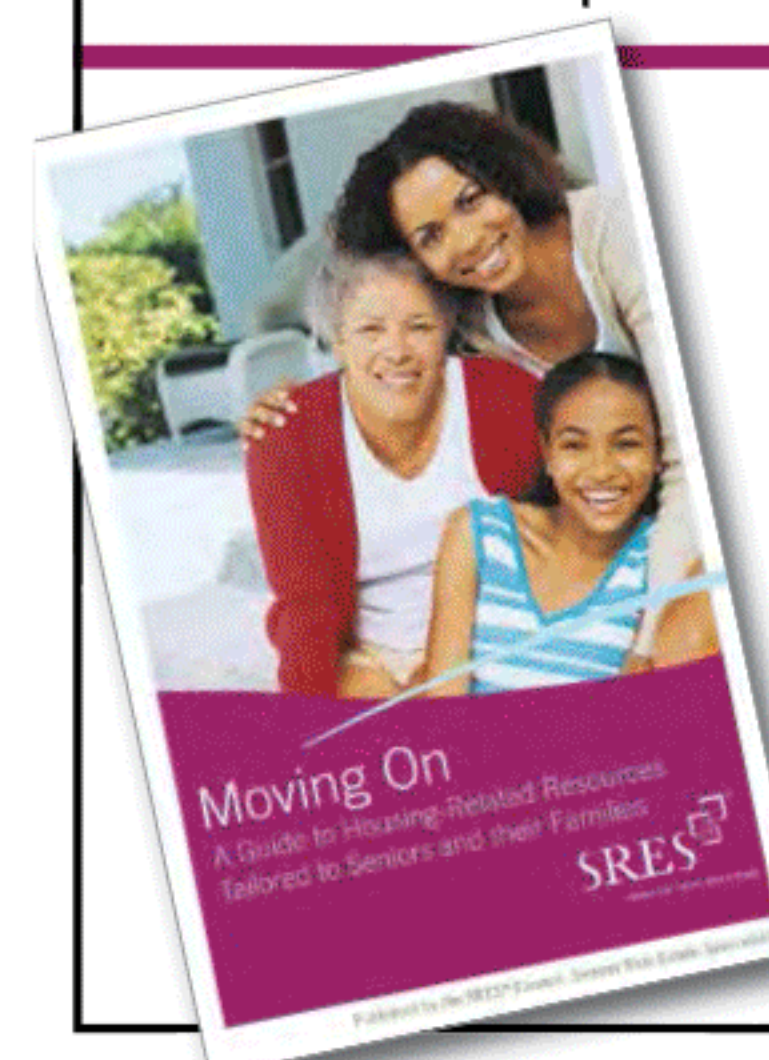
- Is moving the best alternative? If so, where?
- What are the tax-related implications of the sale?
- Do you need a variety of services:  
Handyman? Accountant, including tax advice? Senior moving specialist? Housekeeping? Elder law Attorney for wills/trusts? The counsel of a lender? Home health care? Estate sale specialists? Access to community resources? AND MUCH MORE!



**Jane Olinger**  
Realtor®, CRS, SRES  
CalBRE #00766511

*I'll be happy to send you — FREE — this informative booklet, **Moving On** A Guide to Housing Related Resources. Contact me at (949) 537-2758 or go to [irvinecommunitynews.org/jane-olinger](http://irvinecommunitynews.org/jane-olinger)*

*Jane Olinger*



RE/MAX Premier Realty

[janeolinger@cox.net](mailto:janeolinger@cox.net)  
949-786-3237 Home Office  
949-451-1296 Message Center



# Kenny the Printer®

Orange County's Premier Business Printer

- OFFSET PRINTING • DIGITAL PRINTING • FULFILLMENT SERVICES • MAILING SERVICES • PROMOTIONAL PRODUCTS •

Look for the Green Van!!

## COMPETITIVE PRICING & SUPERIOR SERVICE

# 949.250.3212

Serving All Orange County  
17931 Sky Park Circle | Irvine, CA 92614

Easy Reorder. Go to...  
[www.KennythePrinter.com](http://www.KennythePrinter.com)



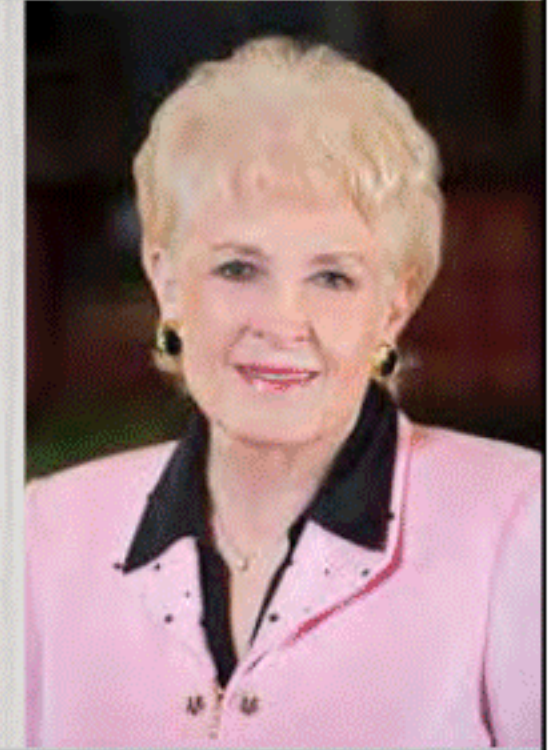
Paid Advertisement



SPECIALIZED REAL ESTATE SERVICES  
FOR ALL YOUR REAL ESTATE NEEDS



**10 BIGGEST MISTAKES TO AVOID**  
When You're Getting Ready To Sell Your Home  
*Call or email me today to receive your FREE booklet!*



**JACI WOODS • 714.406.4926**

[IrvineCommunityNews.org/Jaci-Woods](http://IrvineCommunityNews.org/Jaci-Woods)

CalBRE# 01261744



**HOME IMPROVEMENT  
RESOURCE GUIDE**

Improve the value of your home.  
Call or email Suzanne for a **FREE GUIDE!**



**SUZANNE HARRISON • 714.406.4938**

[IrvineCommunityNews.org/Suzanne-Harrison](http://IrvineCommunityNews.org/Suzanne-Harrison)

CalBRE# 01469272



**CURIOUS ABOUT YOUR HOME VALUE?**

For a **FREE** report go to:  
**HomeValuesOrangeCounty.info**

or

Call or email Sally for a **FREE**,  
no obligation evaluation of your home's value!



**SALLY PICCIUTO • 714.406.4933**

[IrvineCommunityNews.org/Sally-Picciuto](http://IrvineCommunityNews.org/Sally-Picciuto)

CalBRE# 01279725



**BREATHTAKING VIEWS**

ABOUND FROM THIS 2008 CUSTOM BUILT  
MEDITERRANEAN STYLE ESTATE!

11201 ADDISON ROAD • NORTH TUSTIN  
5 BR • 4.5 BA • 5,200 SQFT ON 1/2 ACRE

**CAROLYNN SANTANIELLO**

714.406.4924 CalBRE# 01826185

[IrvineCommunityNews.org/Carolynn-Santaniello](http://IrvineCommunityNews.org/Carolynn-Santaniello)

